



Garden Safari Insect Key



Start here!

Does it have 1 pair or 2 pairs of wings?

1 pair

2 pairs



Does it have wings?

Yes

No

Does it have a slender, twig-like body?

No

Yes

Do the wings meet in the middle or overlap?

Meet

Overlap

Are the wings clear or, patterned with scales or different textures?

Patterned

Clear

Is the body flattened from side to side?

Yes

No

You found a Stick insect!



You found an Ant!

Does the abdomen end in pincer-like parts?

Yes

No

You found a Beetle!

Does it have piercing or chewing mouth-parts?

Piercing

Chewing

You found Fleas or Lice!

Is the back pair of wings fully developed or 'halter' -like?

Halteres



You found a Fly!

You found an Earwig!

Is the mouth a coiled up proboscis?

Yes

No

Does it have special legs adapted for jumping?

Yes

No

Developed

Is the body long and slender or short?

Short



You found a Bee or Wasp!

Are the antennae feathered or clubbed?

Feathered

Clubbed

You found a True bug!

You found a Grasshopper!

You found a Cockroach!

You found a Dragonfly or Damselfly!



You found a Moth!

You found a Butterfly!



An Insect Key Companion

Getting stuck in:

This sheet will help you get started using your insect identification key. There are a couple of things you might need to know before you get out in the garden or the woods hunting for insects.

Identification keys work by asking a few easy questions about what the animal looks like to determine what type of animal you have found.

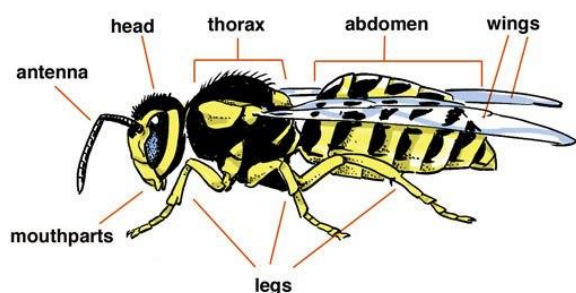
Use this sheet to help if you get stuck.

Starting simply:

This particular interactive insect key is a simplified one. That means it doesn't cover all the different types of insects that exist, just the most well-known insects and the ones you might be lucky enough find in your garden or out in the park.

If you find something that doesn't quite match up with the key you might have found something really special. Insect identification books and the internet are a great help for finding out exactly what kind of creepy crawly you've caught.

The bits of a bug:



Glossary:

Here are some words you might not recognise that will help you identify the stranger parts of an insect.

- **Proboscis** – the long curled-up tube mouth that butterflies have for drinking nectar.

- **Abdomen** – the hind section of an insect's body, attached to the thorax.
- **Halteres** – Small body parts where hind-wings would be, used for flight control in insects like flies.
- **Antennae** – The long sensory organs on the head that insects use to navigate the world around them.

Tips & tricks

Getting stuck? Here are some tips for if the key doesn't seem to match up with what you've found:

- Some insects, like beetles, have wings that stay hidden and folded away and might be hard to spot at first.
- Halteres are also very hard to spot (sometimes even with a microscope!). If you aren't sure how many pairs of wings your insect has try going through the key a couple of times trying different answers.
- Butterflies and moths have two pairs of wings, but sometimes it looks like only one because they overlap and come in all shapes and sizes!
- If you really can't seem to match up your insect with any on this key, you might have something extra special. Have a look in insect books or on the internet for other identification guides to help you work out what it is you've found!

Putting it all to use

- Use your insect key to build up fact files on the different insects you find.
- Go on a garden safari and make a list of all the insects you find. See how this list changes throughout the year over different seasons and weathers.
- Use your new knowledge of insects to help out with local nature surveys. These help scientists learn more about the nature around your house or school.