

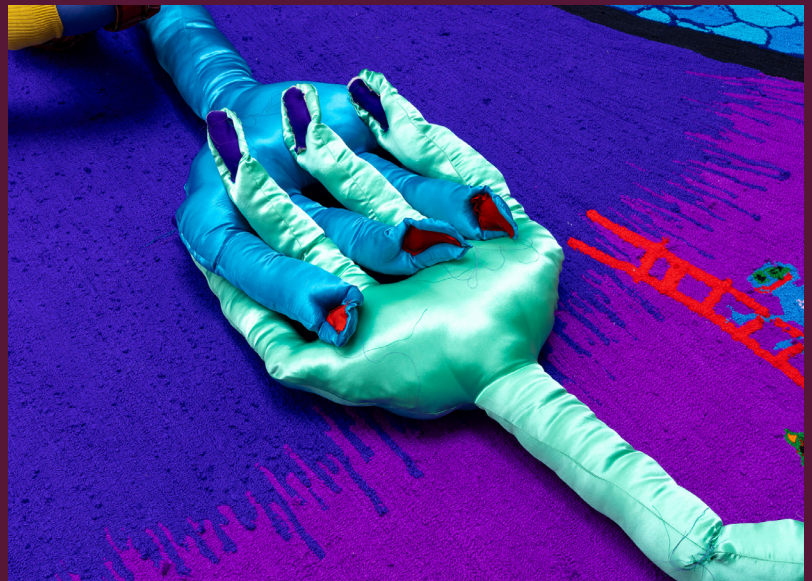


LEEDS
YEAR OF
CULTURE 2023

Supported by Leeds City Council

T | THE
TETLEY

Afra Eisma: splashdown tender School Resource 6



Suitable for All Key Stages

Otherworldly Sock-beings Classroom Activity

Classroom activity in response to Afra Eisma's 'friendly gathering of beings' in the gallery atrium. Using socks as an accessible starting point, this is a textile-based activity that can be developed and adapted appropriately for each Key Stage. Beings can be used to prompt conversations about how we can process and symbolise emotions, e.g. focus on Afra's thoughts on anger being a positive emotion that is a force for change.



friendly gathering of beings

EYFS

Create your very own Otherworldly Being using a sock and some stick-on eyes. Engage in role play, using the puppets, thinking about the identity of the friendly being you have created.

Materials:

- Socks – can buy new or can use odd socks children can bring in from home
- Stick on eyes, shapes

KS1

Using a sock as your starting point, make your very own Otherworldly Being. Make choices of what your being will look like by cutting and adding extra fabric and features, using glue. Engage in role play using the puppets, thinking about the identity of the being, and begin to link with discussions around emotions.

Materials:

- Socks – can buy new or can use odd socks children can bring in from home
- Stick on eyes, shapes
- Scissors
- Fabric/felt scraps
- Glue

KS2

Using a sock as your starting point, make your very own Otherworldly Being. Cut out features and limbs using extra fabric and add on using basic sewing skills. Engage in role play using the puppets, thinking about the identity of the being. Develop ideas around emotions the beings may represent and how they interact with each other's.

Materials:

- Socks – can buy new or can use odd socks children can bring in from home
- Scissors
- Extra fabric and/or felt
- Needle and thread

KS3, GCSE and A-Level

Using a sock as your starting point, make your very own Otherworldly Being. Cut out features and limbs from extra fabric and add on using developed/advanced sewing skills. Being can be given identity and discussion can occur that thinks about link to ideas around emotions the aliens may represent and how they interact with each other's.

Materials:

- Socks – can buy new or can use odd socks children can bring in from home
- Scissors
- Extra fabric
- Needles and thread

SEND (All KS)

As alternative to KS activity - Focus on sensory exploration of using fabric and adding features to sock base. Could be developed into character, with thoughts and prompts on emotion the sock puppet represents. Engage in play-based role play activity with pupils in groups.

CULTURE
OF CULTURE
YEAR OF CULTURE



Photos by Jules Lister



LEEDS
YEAR OF CULTURE **2023**
Supported by Leeds City Council

T | **THE TETLEY**

B
BEATRICE LEE KNOWLES
ARTIST & CREATIVE WORKSHOP FACILITATOR

Supported using public funding by
ARTS COUNCIL ENGLAND
LOTTERY FUNDED