

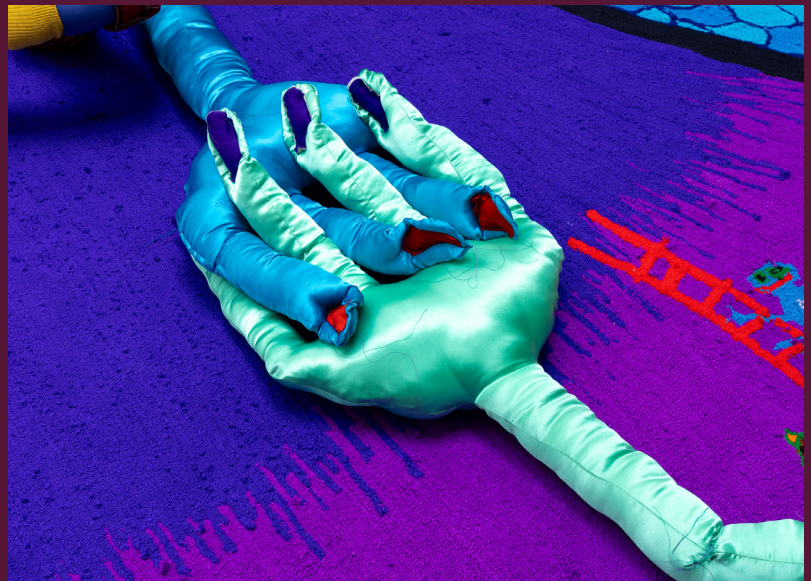


LEEDS
YEAR OF CULTURE **2023**

Supported by Leeds City Council

T | **THE TETLEY**

Afra Eisma: splashdown tender School Resource 4

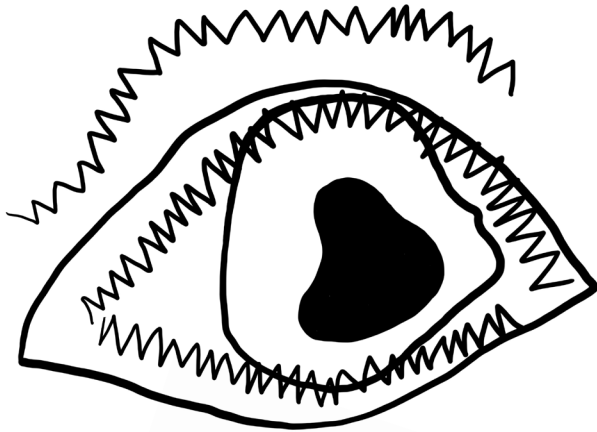


Suitable for EYFS – KS3

Sensory Engagement with Exhibition

Questions/prompts to be used by children and families during school holidays or schools looking at work on screen in classroom.

(a) In the gallery:



What can you see?
What shapes do you see?
What colours can you see?
How do those colours make you feel?

Who do you think they are?

Why do they have long arms?

Go and say Hello!

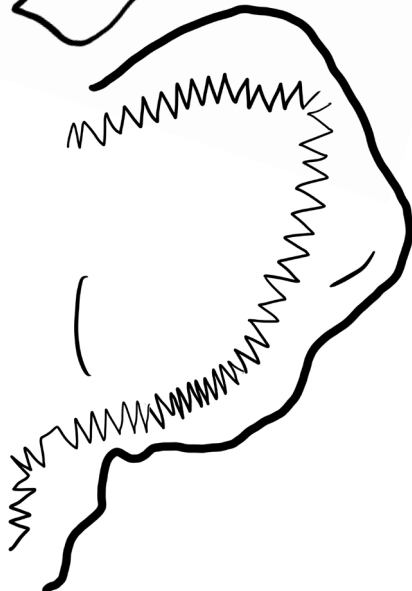


What can you touch?
What does it feel like?
Is it heavy? Is it cosy? Is it soft?

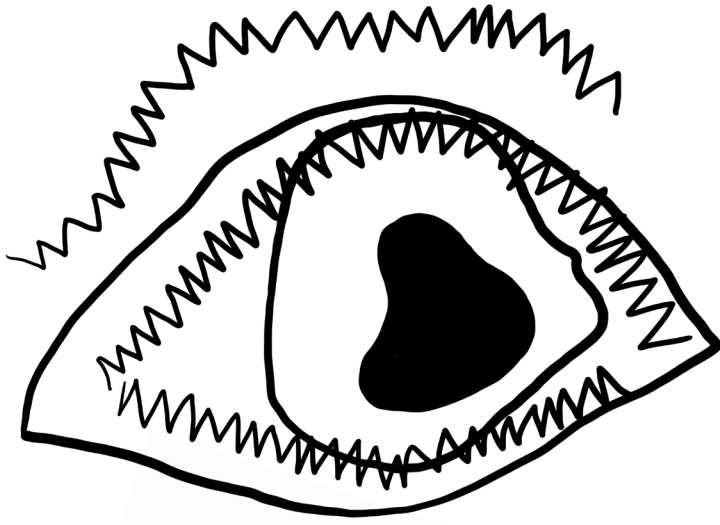
Some things you can't touch - but what do you think they feel like?

What can you hear?
What does it make you think of?

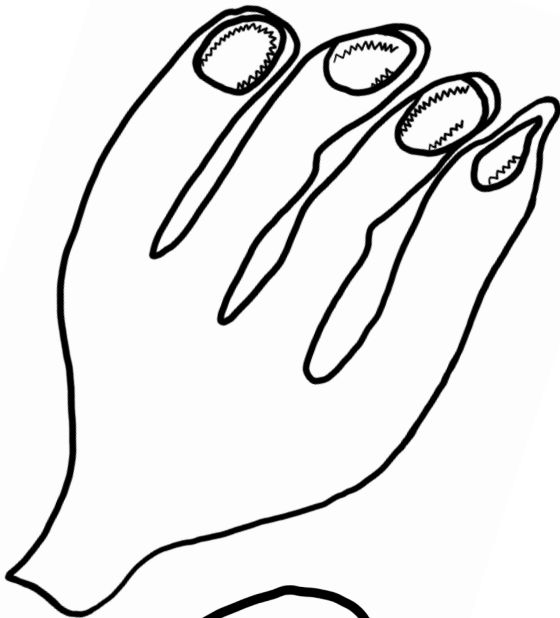
What do you think the aliens sound like?



(b) In the classroom:

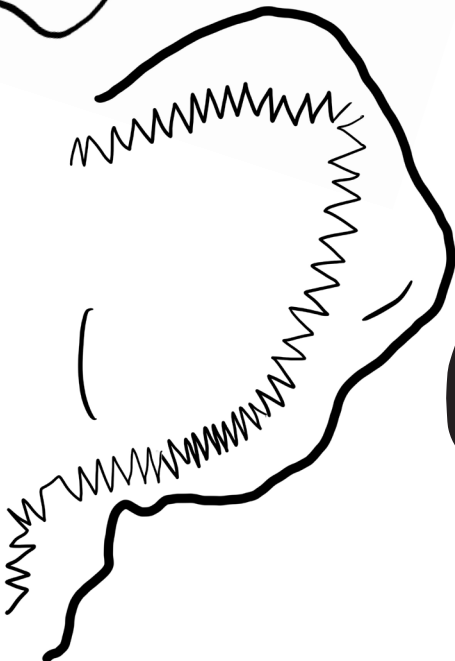


What can you see?
What shapes do you see?
What colours can you see?
How do those colours make you feel?



Who do you think they are?

What do you the aliens feel like to touch?
What do you think the castles feel like to touch?



What do you think the giant stomach sounded like?
What does it make you think of?

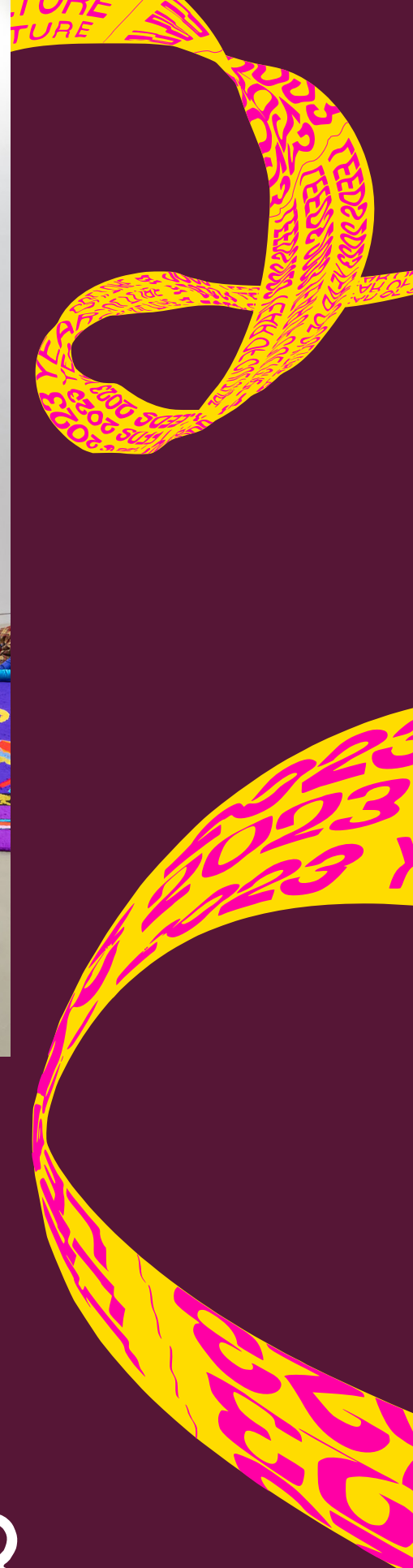
Do you think it is heavy?
Does it look cosy?
Is it soft? Is it cold?

What do you think the aliens sound like?

CULTURE
OF CULTURE
YEAR OF CULTURE



Photos by Jules Lister



LEEDS
YEAR OF CULTURE **2023**

Supported by Leeds City Council

T | **THE TETLEY**

B
BEATRICE
LEE
KNOWLES
ARTIST &
CREATIVE
WORKSHOP
FACILITATOR



LOTTERY FUNDED

Supported using public funding by
ARTS COUNCIL ENGLAND