



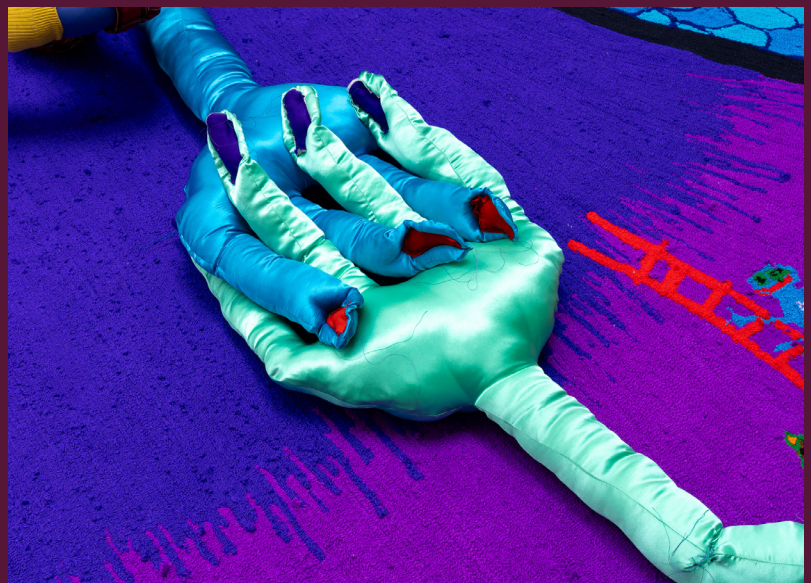
LEEDS
YEAR OF CULTURE **2023**

Supported by Leeds City Council

T | **THE TETLEY**

Afra Eisma: splashdown tender School Resource

8



YEAR OF CULTURE
YEAR OF CULTURE
YEAR OF CULTURE

Suitable for All Key Stages

Clay Vessels Classroom Activity

Engagement and exploration with clay. Linking to Eisma's tactile approach to making in ceramics – visible finger marks on finished pieces. Developing the idea of what a vessel is and what it will hold. Can this vessel be for our emotions? Linking to Eisma's idea that the stomach is a vessel for our emotions. (Classroom discussion point)

How does the clay feel?



What is your vessel going to hold?



How could you decorate your vessel?

For these activities, pupils can use the motifs reference sheet in School Resource 7 as inspiration.

EYFS

Using air dry clay or reusable plasticine. Explore the material – squeezing, pressing, twisting, making thumb marks, is it cold? is it sticky? Use cutters to cut out Eisma inspired motifs – hearts, flowers, hands.

KS1

Using air dry clay, explore the material – squeeze it, press it, twist it. Mark making into clay and cutting out motif shapes. Development activity: make a thumb pot where marks are made on the side. Colour can be added using acrylic paint once vessel is dry.

KS2

Using air dry clay, explore the material – squeeze it, press it, twist it. Create a thumb or coil pot before adding unique details like handles, spouts or turrets. Inspired by those in Eisma's work add motifs to the side of your vessel. Colour can be added using acrylic paint once vessel is dry.

KS3

Exploring air dry clay and its possibilities to create a coil pot or designed vessel. Inspired by those in Eisma's work, think about adding motifs to the sides of your vessel – what do they mean? Colour can be added using acrylic paint once vessel is dry.

GCSE and A-Level

Exploring air dry clay and its possibilities to design and create an independent, advanced vessel. Think about narratives and symbols, add motifs to the side of your vessel – what do they mean? Think about colour and/or glazes and what this adds to your vessel.

SEND (All KS)

Air dry clay. As alternative to KS activity - Focus on sensory exploration of clay - squeezing, pressing, twisting, rolling, pulling etc. Could be developed into thumb pot and apply motifs using stamps or cut outs (using slip and score technique) of excess clay.

CULTURE
OF CULTURE
YEAR OF CULTURE



Photos by Jules Lister



LEADS
YEAR OF CULTURE **2023**
Supported by Leeds City Council

T | **THE TETLEY**

B
BEATRICE LEE KNOWLES
ARTIST & CREATIVE WORKSHOP FACILITATOR

ARTS COUNCIL ENGLAND
Supported using public funding by
ARTS COUNCIL ENGLAND
LOTTERY FUNDED