



The Prince's Room

This room was used as a bedroom for soldiers too. By 1915 there were Welsh, Irish and English patients too. Some patients were a long way from home.

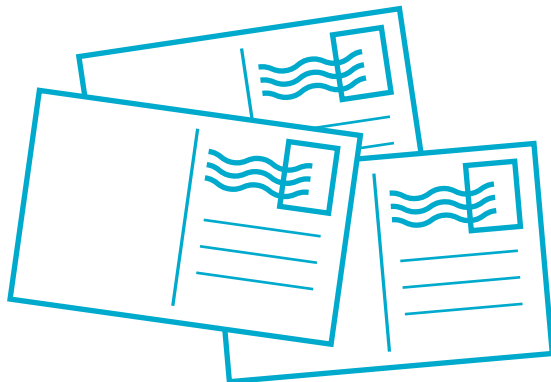
What could you give to a wounded soldier to help them feel better?



Did you know?

Temple Newsam was one of over 100 buildings that was turned into a hospital by the Red Cross in Yorkshire. This included other country houses such as Lotherton Hall and Harewood House.

The Tudor Wing



Spot the postcards sent by a soldier who stayed at Temple Newsam hospital.

Listen to conversations the soldiers and nurses may have had in the house.

Do an activity in Miss Scots Room.

THE HEALING HOME

Explorer's Guide

Discover Temple Newsam House when it was a hospital in the First World War



October 1914, Leeds

Injured Belgian Soldiers and Belgian Refugees Arrive in Leeds



The Great Hall

Belgian soldiers came to Temple Newsam House to help them get better. They came to recover from injuries and surgery. Entertainment, rest and friendly nurses all helped.

Look through the glass door to the gardens outside. The soldiers were wheeled in their beds onto the terrace so they could enjoy the fresh air, draw, write or sunbathe. As soldiers got better they played tennis on a court (where the gardens are now) or walked in the gardens.



Can you find the big glass door by the stained glass windows?

This was put in so that the soldiers could get in and out of the house without using the steps to the front door.



Look through the window and draw the view...





Find the painting of the Honourable Edward Wood (later Lord Halifax) on his horse.

He was the owner of Temple Newsam House in the First World War. He is on his horse in army uniform on his way to war in France in 1914. His horse was called 'High Sheriff'.



Find the photograph, below the painting, of the Great Hall during the war. It shows the billiard table and tables where the soldiers ate. The soldiers wore blue suits as a uniform in hospital.

The Dining Room

During the war, this room was full of beds for the soldiers.

Imagine

What do you think it was like to sleep at Temple Newsam House?

Sometimes up to 30 soldiers stayed.

How many beds do you think you could fit in here?



Did you know?

The bedrooms were given names of countries. There were rooms called Russia, Serbia and France.

Wander down the corridor to

The Still Room

This room was a kitchen in the war.

What clues can you find that tell you this was a kitchen?

Up the Oak Staircase, Down the Oak Corridor to the Picture Gallery

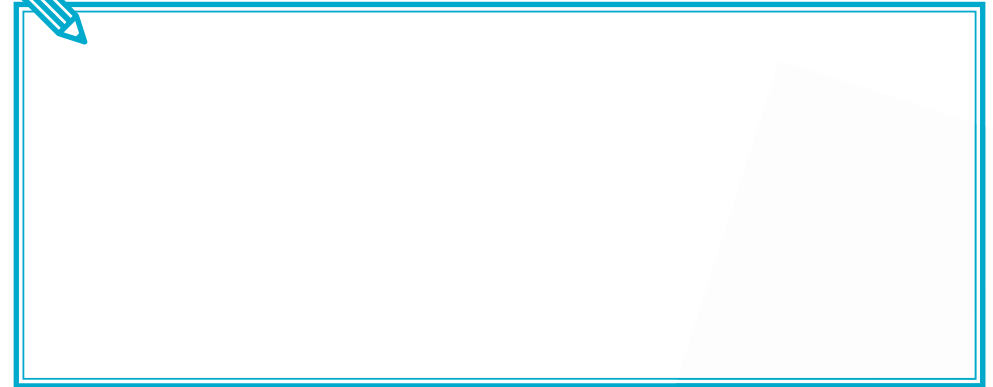


Look through the windows of the Picture Gallery; the stable block is on your right. Belgian refugees stayed here during the war. It took about 6 weeks travelling by foot and ship to get to Leeds! Many refugees lost all their belongings in the war.

Lady Dorothy Wood, Edward Wood's wife, was in charge of the house during the war. She wore a blue nurse's uniform. She lived with her family in this side of the house.

Continue Through the West wing

We don't know where the nurses slept. Which bedroom would you pick? Draw it here...



Did you know?

Lady Wood had a car but she gave it away to be used in the war, possibly as an ambulance. After that she used a horse and cart to travel around.

How did you travel to Temple Newsam House today?

Continue to explore. You might visit the **South Wing** next...

